



Powerful FEATURES

★ KEY BENEFITS

- Instantaneous backup in .02 seconds
- Improves public safety and security
- Reduces labor costs of controlling or resetting intersection
- Remote-monitoring and full telematics to support data-sharing and alerts
- Built to operate in extreme temperatures
- Sophisticated BMS with CAN (2.0b)
- Battery management system performs cell balancing, prevents over/under voltage, current, and pack temperature
- Maintenance-free; 3-year warranty on all components



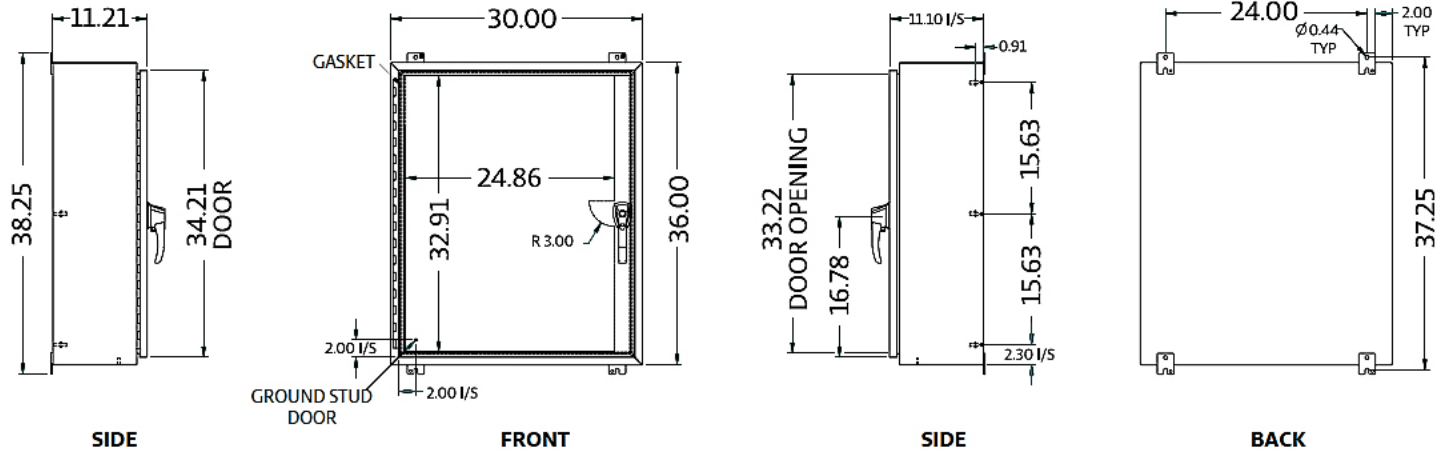
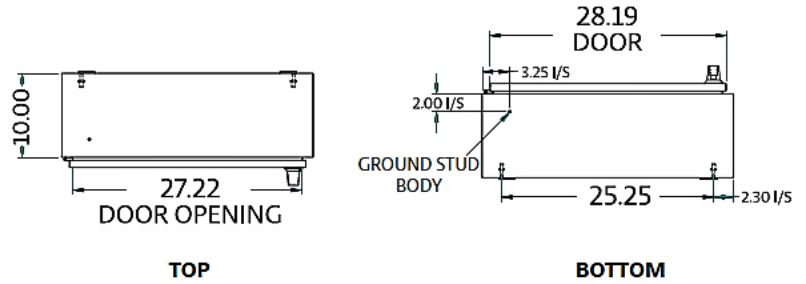
Bluebonnet POWER

www.BluebonnetPower.com

Energized by Viridi®

PHYSICAL PARAMETERS

- Waterproof steel casing
- Enclosure NEMA Type 3R
- Weight: 125kg (275lbs)
- Dimensions are in inches



OPERATING TEMPERATURE

- Discharge: -30°C to 60°C (-22°F to 140°F)¹
- Charge: -20°C to 45°C (-4°F to 113°F)¹

CYCLE LIFE

- 20-year pack service life

BATTERY

- Installed capacity: 196 Ah/5 kWh
- Run time at 250W output (2.1A/120V) – 18hr
- Run time at 500W output (4.6A/120V) – 9hr

CERTIFICATIONS

- UL 458

¹ Operating temperature range mirrors battery cell specifications. Faveo does not require externally supported thermal management. The Battery Management System(BMS) is programmed to manage the pack utilization rate to control the internal pack thermal conditions and prevent operation outside of pack interior temperature limits.

FOR MORE INFORMATION

sales@bluebonnetpower.com

★ (469) 673-5698



www.BluebonnetPower.com

Energized by Viridi®